



MONTHLY MEMBERSHIP PROGRESS REPORT

District 318 B

Results as of: 05/31/2018

GMT: N S SANKAR

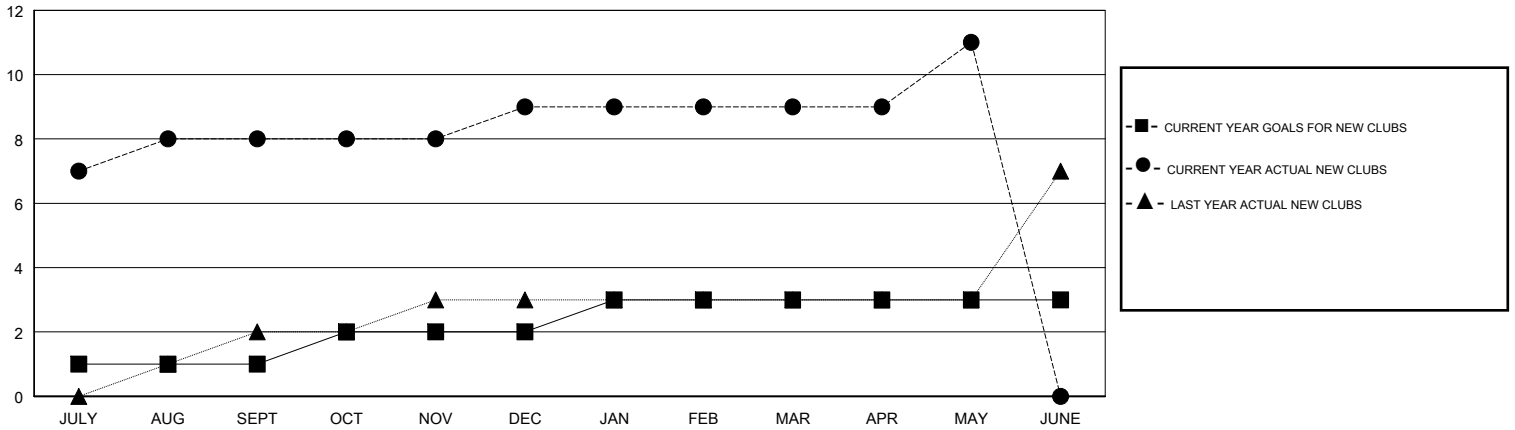
LOCATION INDIA

GMT CA

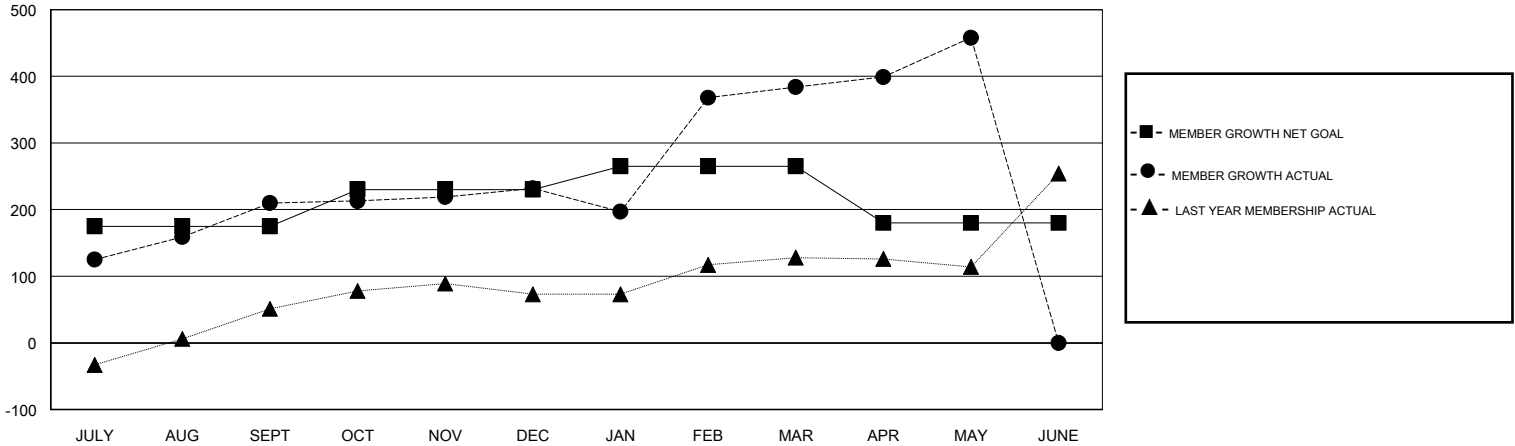
Clubs			
RESULTS FOR 2017-2018			
QUARTER	NEW CLUB GOAL	NEW CLUBS	DROPPED CLUBS
JULY/AUG/SEPT	1	8	1
OCT/NOV/DEC	1	1	1
JAN/FEB/MAR	1	0	1
APR/MAY/JUNE	0	2	0

Members			
RESULTS FOR 2017-2018			
QUARTER	MEMBER GROWTH NET GOAL	MEMBER GROWTH ACTUAL	DROPPED MEMBERS ACTUAL (including transfers)
JULY/AUG/SEPT	175	325	114
OCT/NOV/DEC	55	98	74
JAN/FEB/MAR	35	233	71
APR/MAY/JUNE	-85	101	27

GOALS AND ACTUAL NEW CLUBS CUMULATIVE



GOALS AND ACTUAL MEMBERS CUMULATIVE



DROPPED CLUBS: 3

79 CLUBS OF 122 ADDED 1 OR MORE NEW MEMBERS

GENDER DISTRIBUTION	
MALE	3,514 (87.43%)
FEMALE	505 (12.57%)
Women Percentage Fiscal Year Goal: 10%	

DROPPED MEMBERS	
DECEASED	14
CLUB CANCELLED	46
OTHER	226
TOTAL	286

[CLICK HERE FOR CUMULATIVE MEMBERSHIP DATA](#)

TOTAL FAMILY UNIT MEMBERS	970
FAMILY MEMBERS PAYING HALF DUES	506